



The Progression and Growth of an Artist Maudie Ione Sallee

*Born in Fairfield, CA
November 30, 1954
Died in Berkeley, CA
March 9, 1999*



Oril L Sallee was born and raised in Oklahoma. His wife, Odessa Doolin, was born and raised in Kansas. Oril's military career relocated their

family to Fairfield, California, home to Travis Air Force Base. Their second born daughter was Maudie Ione Sallee. Over Maudie's lifetime she lived in California, Oregon, Washington, Alaska, New Mexico & Oklahoma. She spent the most time in Berkeley, California which is where she passed away and where I scheduled her first public art show in June, 2010.



Growing up in an era of psychedelia and rock & roll, my mother's work took many twists and turns. She created soft sculpture and found art sculpture. She composed highly detailed pencil



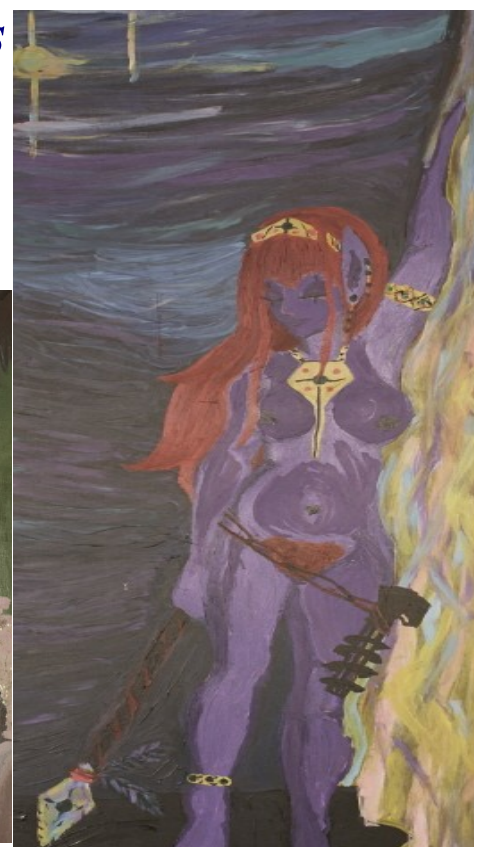
drawing and soft impressionist figure paintings. As she grew in her spiritual beliefs, many of her pieces presented diety images and visions

of her perceptions of the afterlife.

In previous shows I have focused on her psychedelic works and diety images.



However, with this particular showing, I have gathered together a collection of her portraits. I hope



that you enjoy her unique way of capturing and presenting people. Some of these paintings are owned by family members. A few of them are for sale. Prints can be ordered from any paintings you see here. I hope you enjoy the family collection.